

# RichPEP

Richmond Park Equity Project

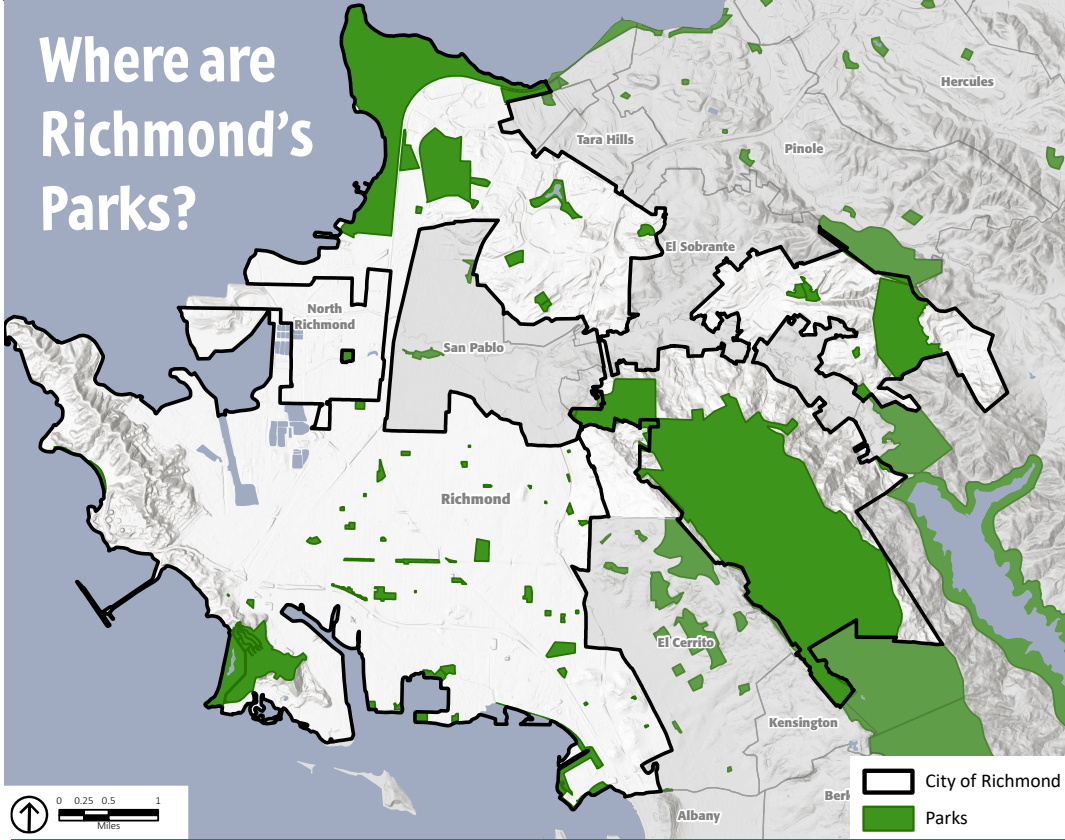
A Black and Brown resident-led movement for park equity in Richmond, California

FOR MORE INFORMATION

VISIT  
RichPEP.org

CONTACT  
RichPEP@RichCityRides.org

## Where are Richmond's Parks?



## Neighborhood Parks

- Atchiswon Village Park
  - Barbara & Jay Vincent Park
  - Belding-Garcia Park
  - Boorman Park
  - Burg Park
  - Country Club Vista Park
  - Crescent Park
  - Harbor-8 Park
  - Hilltop Green Park
  - John F. Kennedy Park
  - Judge Carroll Park
  - Lucas Park
  - Lucretia Edwards Park
  - Mira Vista Park
  - Nevin Park
  - North Richmond Ball Field
  - Parchester Park
  - Rain Cloud Park
  - Rosie the Riveter Park
  - Shields-Reid Park
  - Shimada Friendship Park
  - Southside Park
  - State Court Park
  - The Plunge
  - Tiller Park
  - Veterans Memorial Park
  - Wendell Park
  - Miraflores Sustainable Greenbelt
  - Montalvin Park\*
  - Montara Bay Community Center\*
- \* Neighborhood Parks in Unincorporated Study Area

## What kinds of parks does Richmond have?

**Community Parks** serve the widest range and greatest number of users. They include active and passive recreation, gathering areas, and organized sports.

**Joint Use Parks** may be operated with a school district or another agency or entity.

**Neighborhood Parks** provide active recreation elements for local residents, and may include special features that attract users from a wider geographic area.

**Pocket Parks** are small, are integrated into the neighborhood they serve, and are compatible with residential uses. They function as a neighborhood "front yard," primarily for relaxing, socializing and passive recreation.

### Community Parks

- B.T. Anderson Jr. Park
- Central Richmond Greenway
- Hilltop Lake Park
- La Moine Park
- Marina Bay Park
- Marina Bay Trail
- Martin Luther King Jr. Park
- Nichol Parkw
- Pt. Molate Beach Park
- Unity Park

### Joint Use Parks

- Central Park
- Fairmede Park
- Hilltop Park
- Kennedy Swim Center
- Olinda School Field
- Valley View School Fields

### Pocket Parks

- Abraham Braxton Park
- Bay Vista Park
- Clinton Playlot
- Elm Playlot
- Humboldt Park
- Humphrey Play Lot
- Huntington Park / Senior Complex
- Janice Play Lot
- Kern Play Lot
- Mendocino Play Lot
- Monterey Play Lot
- Richmond Civic Center Plaza
- Sheridan Observation Point
- Solano Play Lot
- Stewart Playground
- Virginia Play Lot

# RichPEP

## Richmond Park Equity Project

A Black and Brown resident-led movement for park equity in Richmond, California

FOR MORE INFORMATION

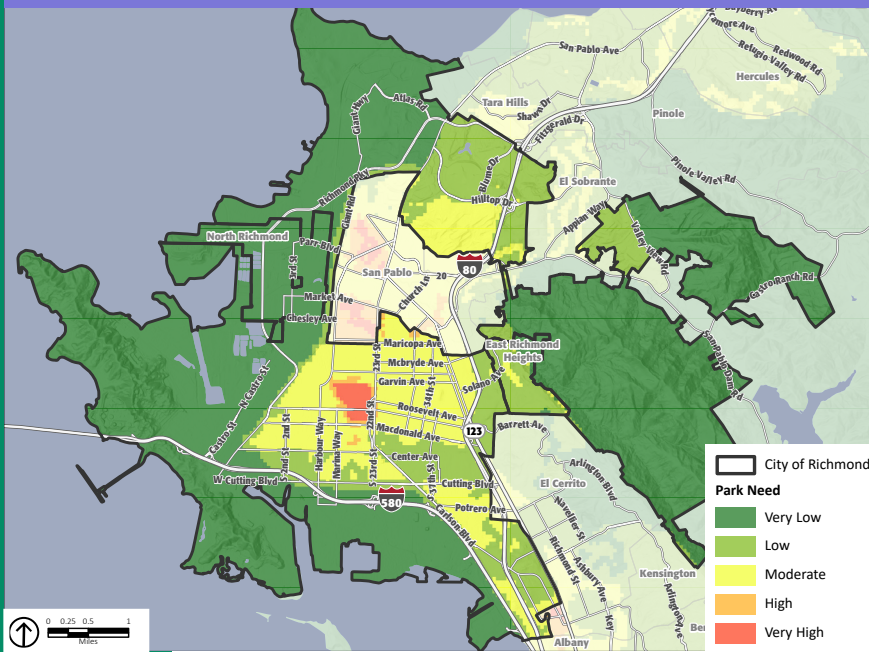
VISIT  
[RichPEP.org](http://RichPEP.org)

CONTACT  
[RichPEP@RichCityRides.org](mailto:RichPEP@RichCityRides.org)

### Who has access to parks in Richmond?

The maps below use available data to measure which neighborhoods have the most park space that is easy to get to. If we compare these measurements to data about the people living in those neighborhoods, we can see that **access to parks in Richmond is unevenly distributed**. Residents in affluent neighborhoods generally have better access to parks, while low-income communities and communities of color often have fewer parks.

#### PARK NEED

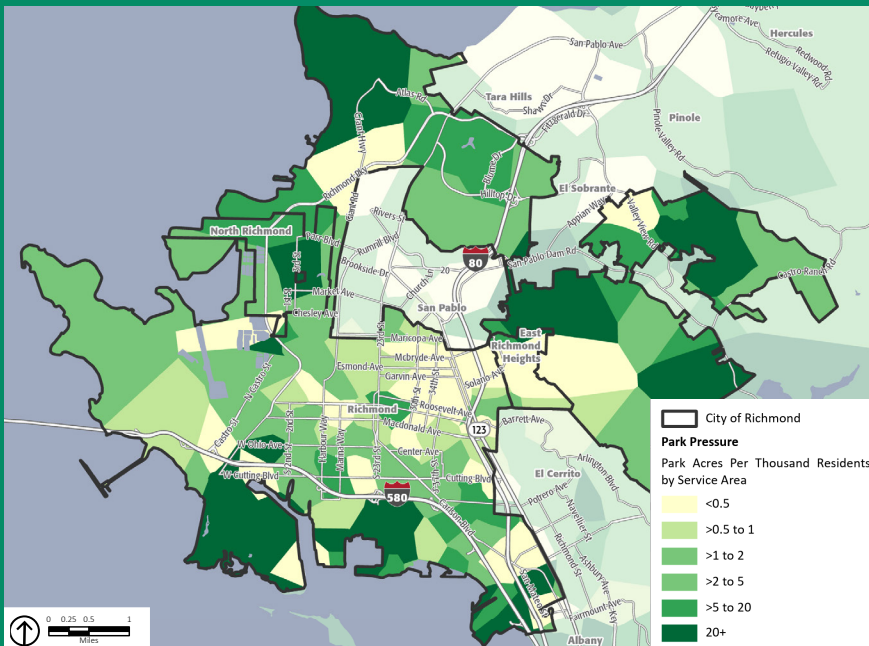


Other data will be gathered and studied as a part of the Richmond Park Equity Project, such as the condition of park amenities, barriers to park access, and park programming and maintenance needs. **An understanding of inequities in park access is central to the project prioritization framework being developed** as part of RichPEP.

#### PARK NEED

This map shows areas have higher need for more parks and areas that have lower need. It was made by combining three other maps that show how many people live in an area, how far they have to walk to get to a park, and how much park space is available. Areas with lots of people, far walks to parks, and not much park space have more need for parks (shown in orange and red). Areas with fewer people, shorter walks to parks, and lots of park space may have less need for more parks (shown in green).

#### PARK PRESSURE



#### PARK PRESSURE

This map shows how crowded parks would be if everyone went to the park. It uses population density and park size to show how many acres of park are available for every thousand people in an area. Places with lots of people and not many parks will be more crowded (yellow), and places with fewer people and lots of parks will be less crowded (dark green).